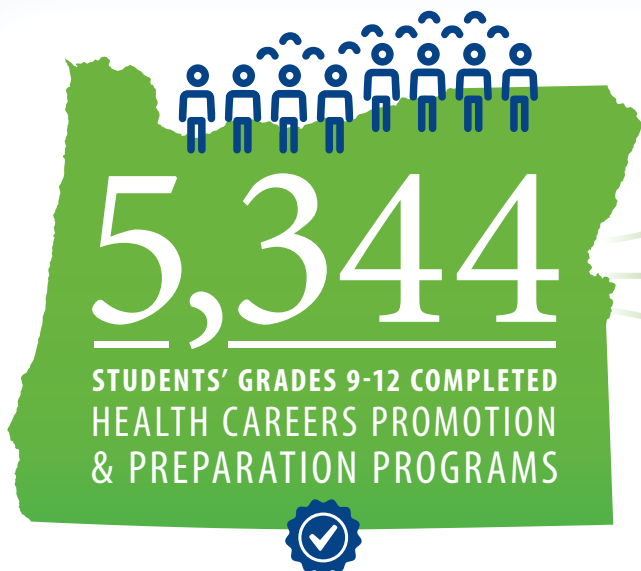


Oregon AHEC

2014–2015 ANNUAL REPORT HIGHLIGHTS



34% *from an underrepresented minority*

47% *from a disadvantaged background*

72% *from a rural background*



Coordinated
**730 WEEKS
OF TRAINING**
in a rural primary care setting for
136 medical students



100% *of Oregon Rural Scholars
Program 2014 cohort matched
into Primary Care Residencies*



**based on the reporting
period of July 1, 2014–
June 30, 2015*

Oregon AHEC System

Oregon Pacific AHEC

www.opahec.org

Hosted by the Samaritan Health System in Lincoln City, the Center serves communities along the Oregon Coast and I-5 Corridor, including the counties of Benton, Clatsop, Columbia, Lincoln, Linn, Marion, Polk, Tillamook and Yamhill.



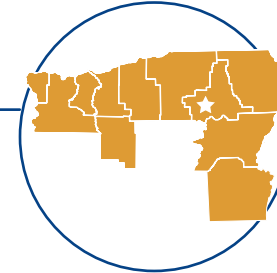
OHSU AHEC Program Office
www.ohsu.edu/ahec

Oregon Healthcare Workforce Institute
www.oregonhwi.org
Workforce Development Data

Northeast Oregon AHEC

www.eou.edu/neoahc

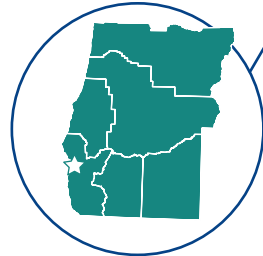
Located on the campus of Eastern Oregon University in La Grande, the center serves Baker, Gilliam, Hood River, Malheur, Morrow, Sherman, Umatilla, Union, Wallowa, Wasco and Wheeler counties.



AHEC of Southwest Oregon

www.healthyoregon.com

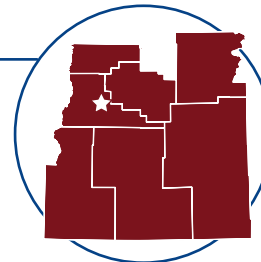
Located in Roseburg, the center provides services to the counties of Coos, Curry, Douglas, Lane, Jackson and Josephine.



Cascades East AHEC

www.cascadeseast.org

Hosted by the St. Charles Medical Center in Bend, the Center serves Central and Southeastern Oregon and includes the counties of Crook, Deschutes, Grant, Harney, Jefferson, Klamath, Lake, and the Warm Springs Community in Wasco County.



For more information on Oregon AHEC visit: www.ohsu.edu/ahec

- ✓ Public Health Education
- ✓ Community Hospitals
- ✓ Community Organizations
- ✓ Health Care Providers
- ✓ Local Training Institutions
- ✓ Community/Migrant Health Centers
- ✓ School Systems
- ✓ Health Departments

We educate and train tomorrow's health care providers

